

SOLENOID VALVES

G75-A | 1/8", 1/4" 2 Way, 3 Way NC, NO



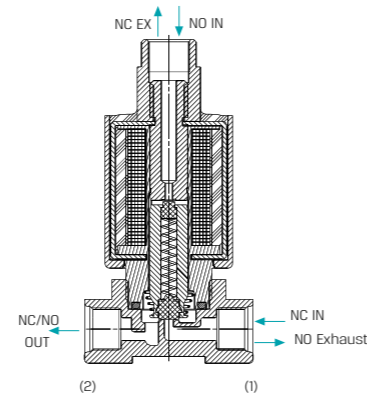
G75-A Brass



G75-A | 2W | Plastic



G75-A | 3W | Plastic



Technical Data

Function	2 Way, 3 Way NC, NO
Ports size	1/8" and 1/4" BSP & NPT
Orifice size	See table
Pressure range	See table
Temperature range	Fluid : 5°C to 50°C (no freezing) Ambient : -10°C to 50°C
Materials in contact with media	Manual override: Reinforced Nylon Main Valve: Brass or Reinforced Nylon Solenoid Operator: Stainless Steel AISI 300 & 400 series Seals: EPDM
Coil voltage	• Voltage and power consumption - see table
Standard protection class	IP66

• Available with brass adaptor upon request

Max. Pressure (bar) table

Function	Orifice (mm)	AC	DC	DC Latch
2W NC	up to 2.0	12	12	12
3W NC	1	16	12	16
	1.2	11	9	11
	1.6	6	5	6
3W NO	1.0	16	16	16
	1.2	12	12	12
	1.6	10	10	10

Voltage & Current table

Solenoid	Voltage	Inrush [A]	Holding [A]
2W 50 Hz	V +10% n-20%	0.3	0.19
2W 60 Hz		0.2	0.14
3W 50/60 Hz *		0.125	0.125
DC		4.5W	

* Except 24V AC without Diode

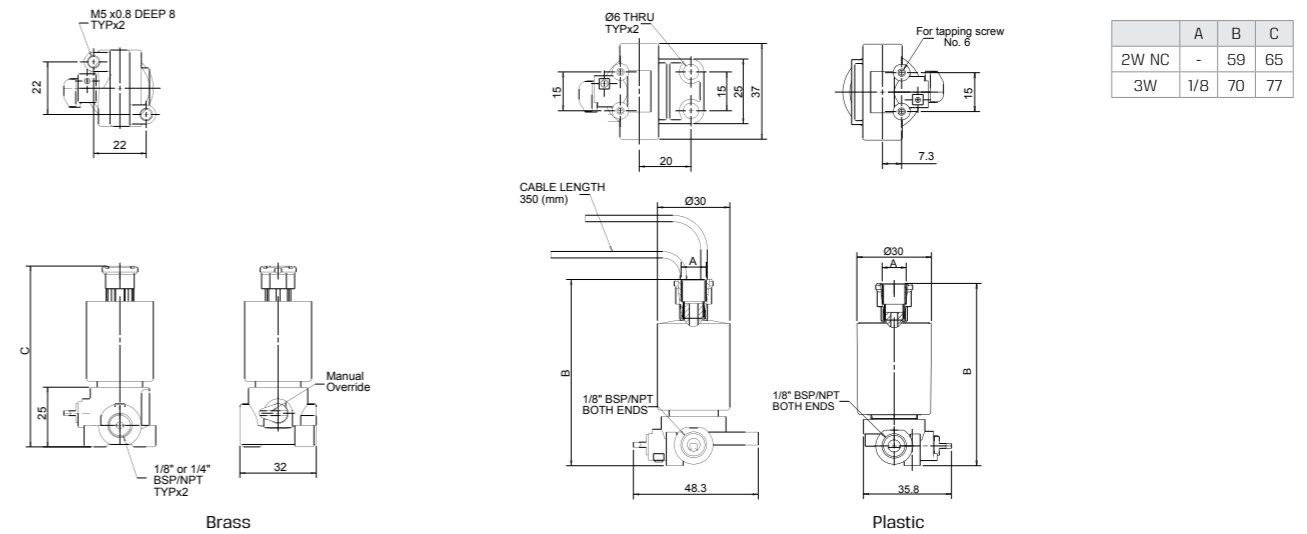
Voltage & Power Consumption

V	AC (W) 50 Hz	DC (W)
	2	4.5
12	•	•
24	•	•
110	• 2W only	

• Available options

G75-A | 1/8", 1/4" 2 Way, 3 Way NC, NO

Dimensions



	A	B	C
2W NC	-	59	65
3W	1/8	70	77

How to Order

G75-A	-	TYPE	PORT	FUNCTION	MANUAL OVERRIDE	ORIFICE	-	VOLTAGE ⁽³⁾	WIRES
		with flange	1 1/8" BSP	10 2W NC	1 None	0 1.0	1	24V AC	1 two null
		without flange	2 1/8" NPT	11 3W NC	3 Plastic ⁽²⁾	1 1.2	2	24V AC w/out Diode ⁽⁴⁾	1R three ⁽⁵⁾ a
		Brass	3 1/4" BSP ⁽¹⁾	20 3W NO	4	1.6	3	12V AC	3
			1/4" NPT ⁽¹⁾	21		2.0	4	12V DC	4
								24V DC	5
								23Ω	6
								110V AC	7
								4Ω	B
								9Ω	C
								12Ω	D

Coil resistance vs input voltage range

Resistance [Ω]	Suitable input voltage range [V]
4	6 - 9
9	12 - 14
12	14 - 16
23	18 - 21

Example : G75-A-110302-1

G75 with flange, 1/8" BSP, 3W NC, no manual override, 1.2 orifice, 24V AC coil, two wires

G75-A - 1 10 3 0 2 - 1

(1) Brass only

(2) Recommended for AC and continuous DC only

(3) For Latch : Refer to coil resistance vs input voltage table

(4) 3W NO 1.6 mm : Max pressure is 8 bars

(5) For Latch only

* To order valves manufactured according to your specific requirements, please contact our technical sales department